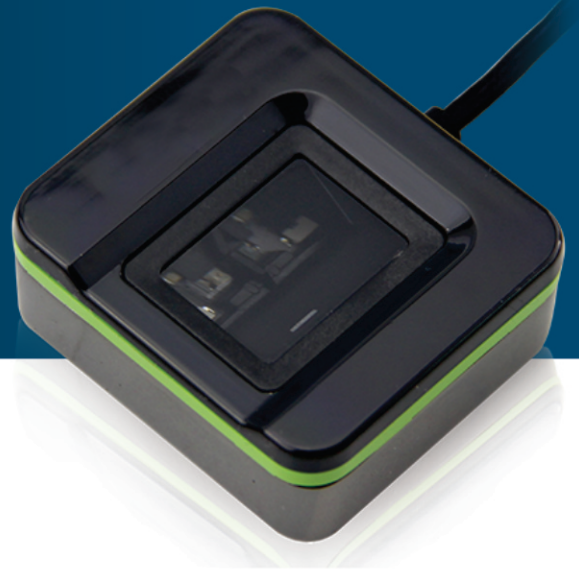


# EBZU03

## USB Fingerprint Scanner



The EBZU03 fingerprint device connects to Android Smartphones (Mobile App) / Tablets / Desktops through the Micro USB port. It provides positive identification of employees both office-bound or off-site. The devices can scan multiple employees.

### APPLICATIONS

- Enrolment reader
- Desktop device

### SPECIFICATIONS

Material	Optical
Android Version	5+
Fingerprint Capacity	500
Encrypted Fingerprint Data	Yes
Power Consumption	5V:200mA scanning; 5V:60mA idle (waiting for finger)
Live Fingerprint Verification	No
Power Voltage	5V
Communication	USB 2.0/USB1.1
USB Compatibility	OTG (On the Go)
Image Resolution	500dpi
Dimension	75.5 x 53.2 x 19 mm (LxWxH)
Image Format	RAW, BMP, JPG
Operating Environment	-20 °C to +50 °C; 90% r.h.

